



WINDOWS SECURE BROWSER:
INSTALLATION MANUAL



CONTENTS

Browsers Supported	2
Installing the Windows Secure browser	2
Verification	4

Browsers Supported

Operating System	Browser supported	
Windows 7, 8, 8.1 and 10	Google Chrome	Firefox

NOTE: Secure browser is not compatible with S Mode Windows

Installing the Windows Secure browser

ES Secure Browser (lockdown browser) allows a student to take an exam in a secure environment.

Follow the steps below to install the Secure Browser for Windows Operating System:

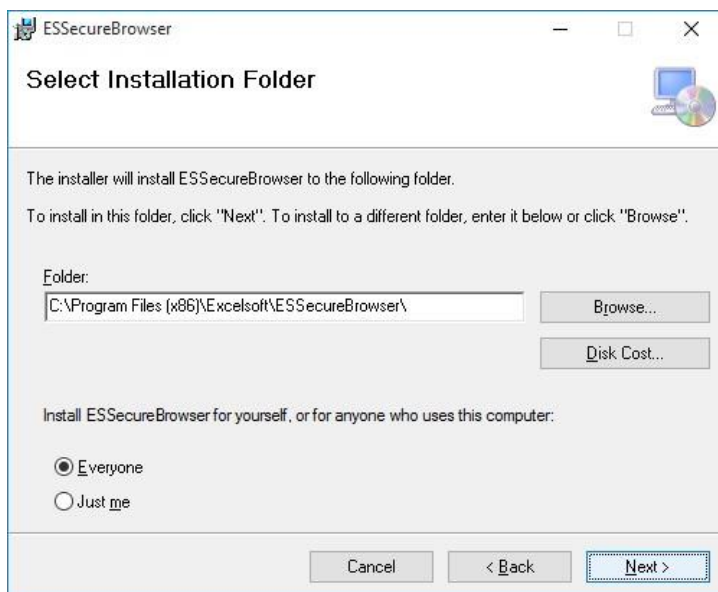
1. Double-click on the MSI installation file to view Setup wizard as displayed below.

NOTE: In the case of Windows 10 OS, the below screen is displayed. Click on Run anyway.

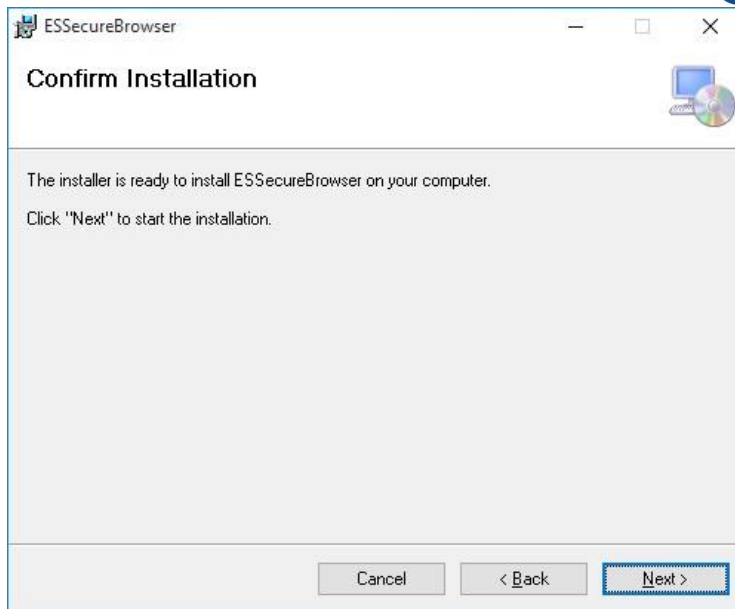




2. Click "**Next**".



3. By default, the folder path is selected. Click "**Browse**" to select a different path, if required.
4. After you select the path / if you feel the default selected path is correct, click "**Next**".

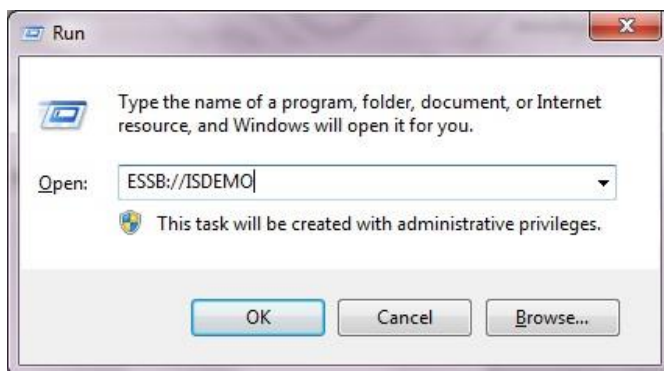


5. Click "**Next**" to confirm the installation.
6. Once installed, the Lockdown browser may call up a Microsoft Edge browser window. Close out of the window

Verification

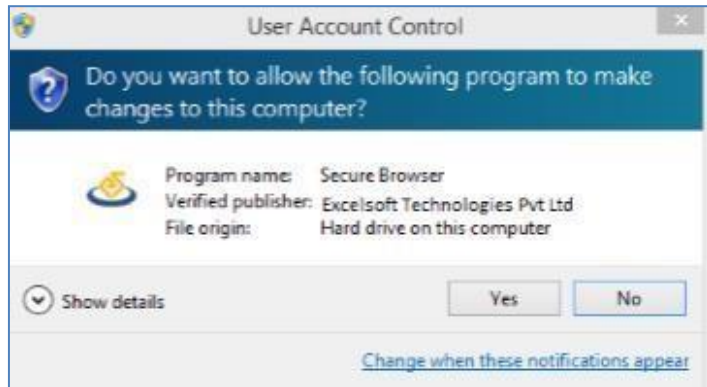
To verify if the secure browser is installed in the system before the student starts the test, please follow the steps below:

1. Press the Windows button + R in your keyboard to view the following popup window.



2. Type "**ESSB://ISDEMO**" in the text area as displayed above and click **OK**.

If the secure browser is installed successfully, then the following popup window is displayed.



3. Click **"Yes"** to view the "Lockdown browser installed successfully" message in a new browser window.

NOTE: Do not launch the browser on its own. On the day of your examination the Secure browser will launch automatically when you start your exam.